

Smyrna Medical Plaza

515 Stonecrest Pkwy | Smyrna, TN | 37167

MEDICAL/OFFICE SPACE FOR LEASE



Building owned by DAVIS REAL ESTATE



LEASING INFORMATION

Branden Cadavid | 954.296.9103 | branden@hbre.us

DESIGNED FOR PATIENTS

Smyrna Medical Plaza | 515 Stonecrest Pkwy | Smyrna, TN | 37167

Key Tenants



Property Highlights



38,416 TOTAL BUILDING SF

- Medical or general office
- Ample surface level parking



CONVENIENT ONSITE CARE

- Premier property management team
- Welcoming lobby for patients, tenants, and visitors
- Convenient covered drop-off area



ACCESS TO AREA AMENITIES

- Well-located in the heart of Smyrna's medical district with convenient access to I-24
- Within 0.5 miles of TriStar Stonecrest Medical Center Hospital, a 119 bed inpatient hospital
- Close proximity to major retail centers with over 25 restaurants in a 1 mile radius



IN THE HEART OF SMYRNA'S MEDICAL DISTRICT

Smyrna Medical Plaza | 515 Stonecrest Pkwy | Smyrna, TN | 37167

NEARBY MEDICAL & AMENITIES

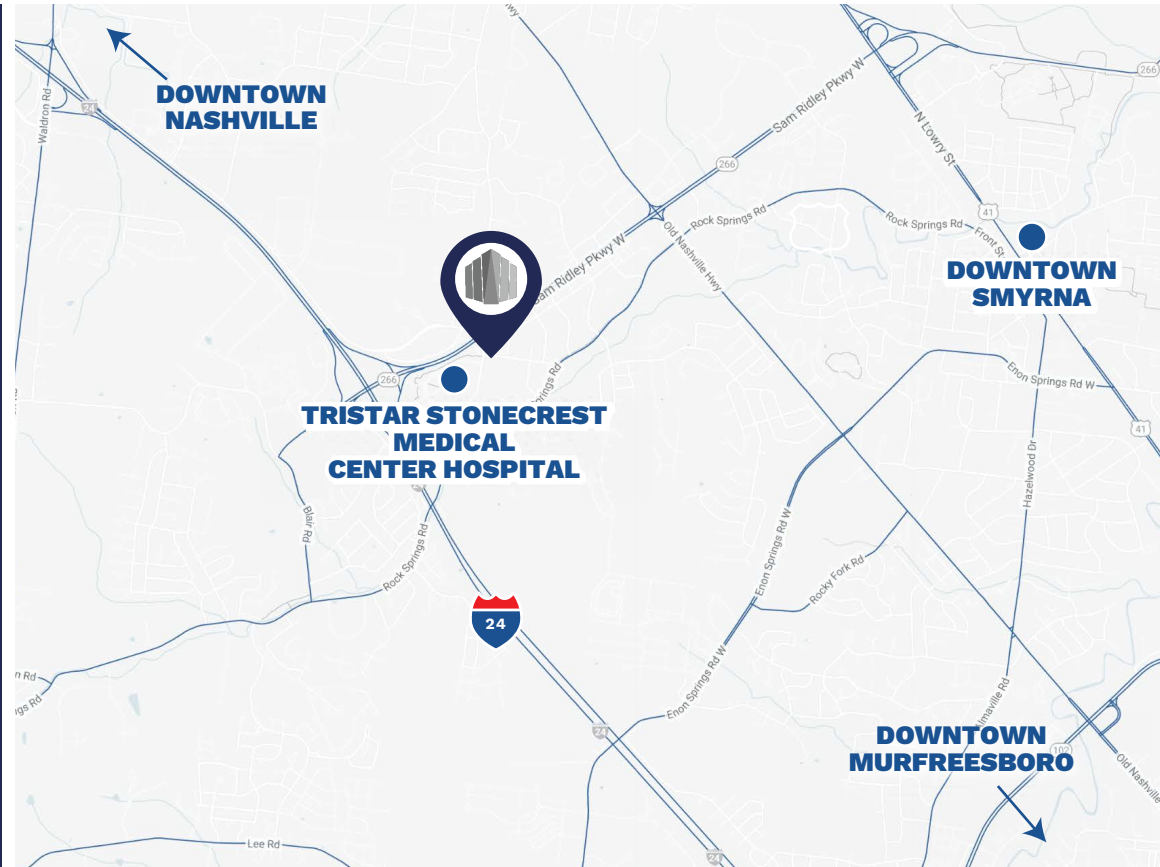
TriStar Stonecrest Medical Center Hospital
2 minutes - 0.4 miles

Dining
3 minutes - 0.6 miles

Smyrna (downtown)
11 minutes - 4.0 miles

Murfreesboro (downtown)
25 minutes - 16 miles

Nashville (downtown)
25 minutes - 22 miles



TRAFFIC COUNTS

	CARS PER DAY
Rock Springs Rd	17,449
Sam Ridley Pkwy	54,101
I-24	132,455

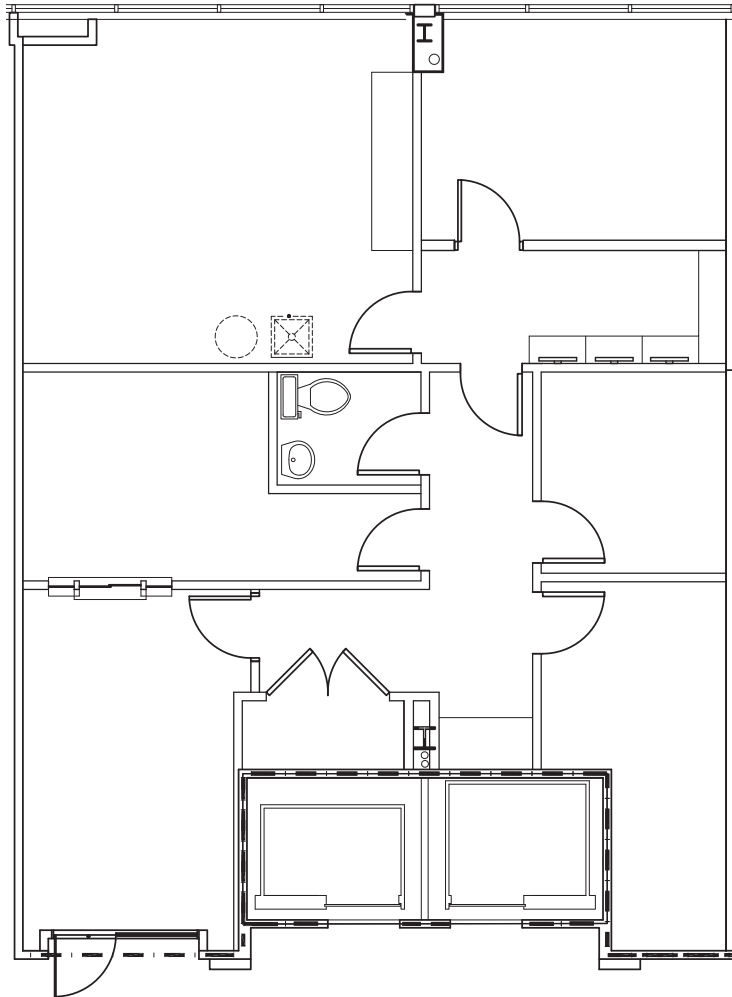
2024 SMYRNA DEMOGRAPHICS

	2 MILES	5 MILES	10 MILES
Population	27,523	117,742	360,478
2029 Population Projection	31,187	130,665	389,200
Total Households	10,001	41,125	127,820
Average HH Income	\$101,387	\$100,445	\$109,494



TAKE A TOUR

Smyrna Medical Plaza | 515 Stonecrest Pkwy | Smyrna, TN | 37167



SUITE 210 | 1,663 SF

- Inviting reception area and waiting room
- (2) exam rooms and (1) office
- Private restroom
- Dedicated lab space



Scan for virtual tours and availabilities.





CONTACT FOR MORE INFORMATION:



Branden Cadavid
954.296.9103
branden@hbre.us

750 OLD HICKORY BLVD, SUITE 125-1 | BRENTWOOD, TN 37027 | 615.564.4133 | WWW.HBRE.US