



Medical Space For Lease

11080 161st Street West, Lakeville, MN 55044



Jill Rasmussen CCIM, SIOR
612.341.3247
jrasmussen@davishre.com

Anne Madyun CCIM
612.454.4172
amadyun@davishre.com

davishre.com



Medical Space For Lease

Lakeville Health | 11080 161st Street West, Lakeville, MN 55044



- Proposed 1 story Class A medical building for lease
- Premier signage opportunity
- Easy access to and from I-35
- 5/1000 parking ratio
- Surrounded by new multi-family construction
- Competitive lease rates and improvement allowances for new construction

Building Size:	Space Available:
12,000 sq. ft.	12,000 sq. ft.
Net Rental Rate:	Negotiable
Operating Expenses:	\$ 9.00/sq. ft.
Real Estate Taxes:	\$ 4.00/sq. ft.



NEARBY TENANTS:

NORAN
NEUROLOGICAL
CLINIC

MIDWEST
EAR, NOSE & THROAT SPECIALISTS

LAKEVILLE
FOOT & ANKLE CLINIC

MINNESOTA
WellCare

Skin Rx
Med Spa



TRAFFIC COUNT

85,000 vehicles on I-35 A.A.D.T.
(average annual daily traffic)
9,300 vehicles on 162nd St W A.A.D.T.



2023 ESTIMATED POPULATION

1 mile: 7,174
3 miles: 58,539
5 miles: 172,760



2023 ESTIMATED AVERAGE HOUSEHOLD INCOME

1 mile: \$110,955
3 miles: \$133,518
5 miles: \$130,108

Jill Rasmussen CCIM, SIOR
612.341.3247
jrasmussen@davishre.com

Anne Madyun CCIM
612.454.4172
amadyun@davishre.com

davishre.com



Medical Space For Lease

Lakeville Health | 11080 161st Street West, Lakeville, MN 55044

Site Plan



Jill Rasmussen CCIM, SIOR
612.341.3247
jrasmussen@davishre.com

Anne Madyun CCIM
612.454.4172
amadyun@davishre.com

davishre.com

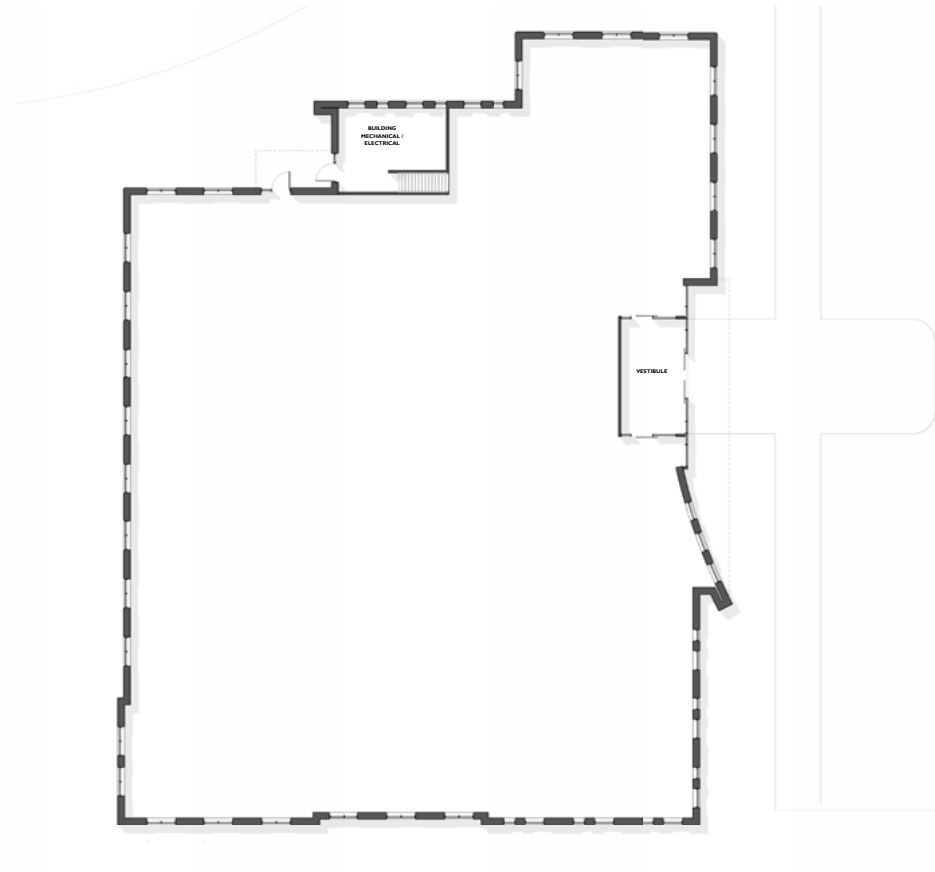


Medical Space For Lease

Lakeville Health | 11080 161st Street West, Lakeville, MN 55044

Floor Plan

Level 01
12,000 RSF



Jill Rasmussen CCIM, SIOR
612.341.3247
jrasmussen@davishre.com

Anne Madyun CCIM
612.454.4172
amadyun@davishre.com

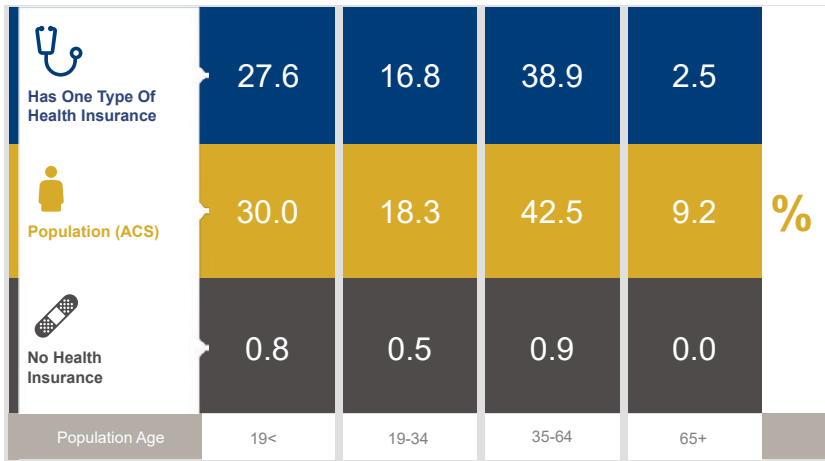
davishre.com



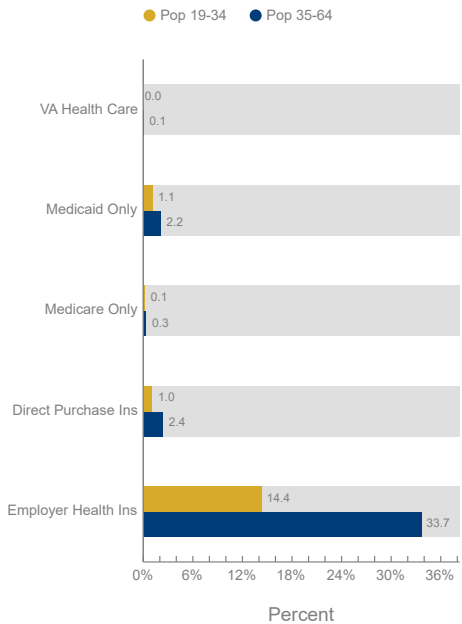
Medical Space For Lease

Lakeville Health | 11080 161st Street West, Lakeville, MN 55044

Healthcare and Insurance Statistics



Health Insurance Coverage (ACS)



Health Care (Consumer Spending)	Annual Expenditure
Medicare Payments	\$1,173.3
Physician Services	\$407.2
Dental Services	\$633.5
Eyecare Services	\$127.5
Lab Tests/X-rays	\$111.6
Hospital Room & Hospital Service	\$378.6

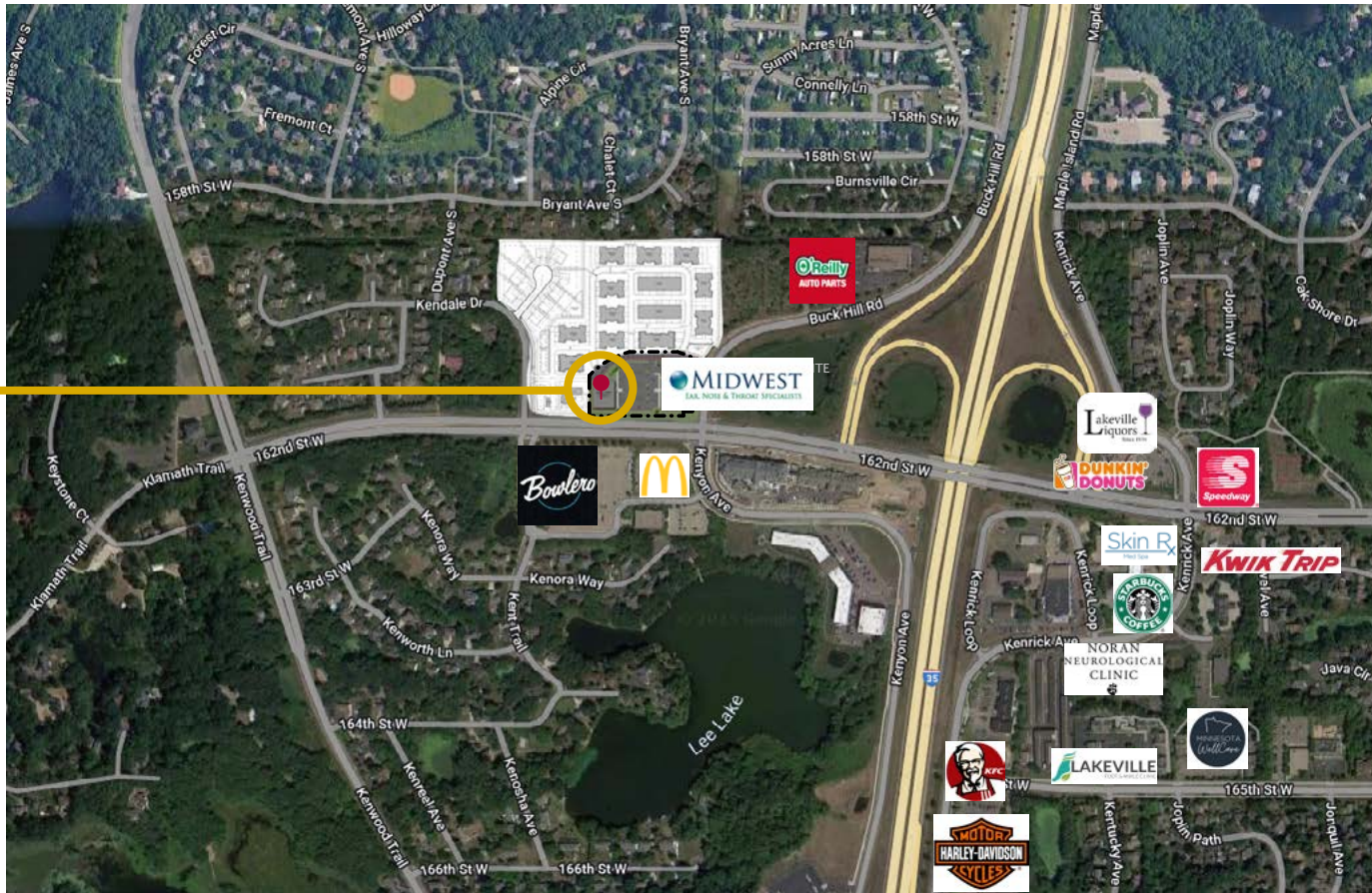
*ACS: American Community Survey

Medical Space For Lease

Lakeville Health | 11080 161st Street West, Lakeville, MN 55044

Aerial View

Lakeville Health
11080 161st Street West
Lakeville, MN 55044





Medical Space For Lease

Lakeville Health | 11080 161st Street West, Lakeville, MN 55044

The Lakeville Market

Top Employers	# of Employees	Type
ISD #194	1,373	Educational Services
Hearthside Food Solutions	620	Manufacturing
TreeHouse Private Brands	540	Manufacturing
Post Consumer Brands	450	Manufacturing
Menasha Corps	406	Supply Chain
BTD Manufacturing	327	Manufacturing
Imperial Plastics	260	Manufacturing
Jeff Belzer's	233	Retail Trade
NPL Construction	212	Construction
FedEx Freight	206	Supply Chain
City of Lakeville	204	Government/Public

Key Facts

