



Medical Space For Lease

Crystal Medical Center | 5700 Bottineau Blvd, Crystal, MN 55429



Anne Madyun, CCIM
612.454.4172
amadyun@davishre.com

Jill Rasmussen, CCIM, SIOR
612.341.3247
jrasmussen@davishre.com

Nick Holien
612.454.4167
nholien@davishre.com davishre.com

Healthpeak® | **DOC LISTED NYSE**



Medical Space For Lease

Crystal Medical Center | 5700 Bottineau Blvd, Crystal, MN 55429



- Dense area demographics
- Superior access and visibility
- Strong signage opportunities on County Road 81
- Free conference room available to tenants
- 5/1000 parking ratio allowing ample parking for patients, staff and physicians
- **Lease incentives available**

Building Size:
44,865 sq. ft.

Space Available:
5,274 sq. ft.

T

BUILDING TENANTS:



TRAFFIC COUNT

19,700 vehicles on County Rd 81 A.A.D.T. (average annual daily traffic)



2023 ESTIMATED POPULATION

1 mile: 11,169
 3 miles: 112,597
 5 miles: 285,477



2023 ESTIMATED AVERAGE HOUSEHOLD INCOME

1 mile: \$85,915
 3 miles: \$89,299
 5 miles: \$100,780

Anne Madyun, CCIM | 612.454.4172 | amadyun@davishre.com
Jill Rasmussen, CCIM, SIOR | 612.341.3247 | jrasmussen@davishre.com
Nick Holien | 612.454.4167 | nholien@davishre.com | **davishre.com**



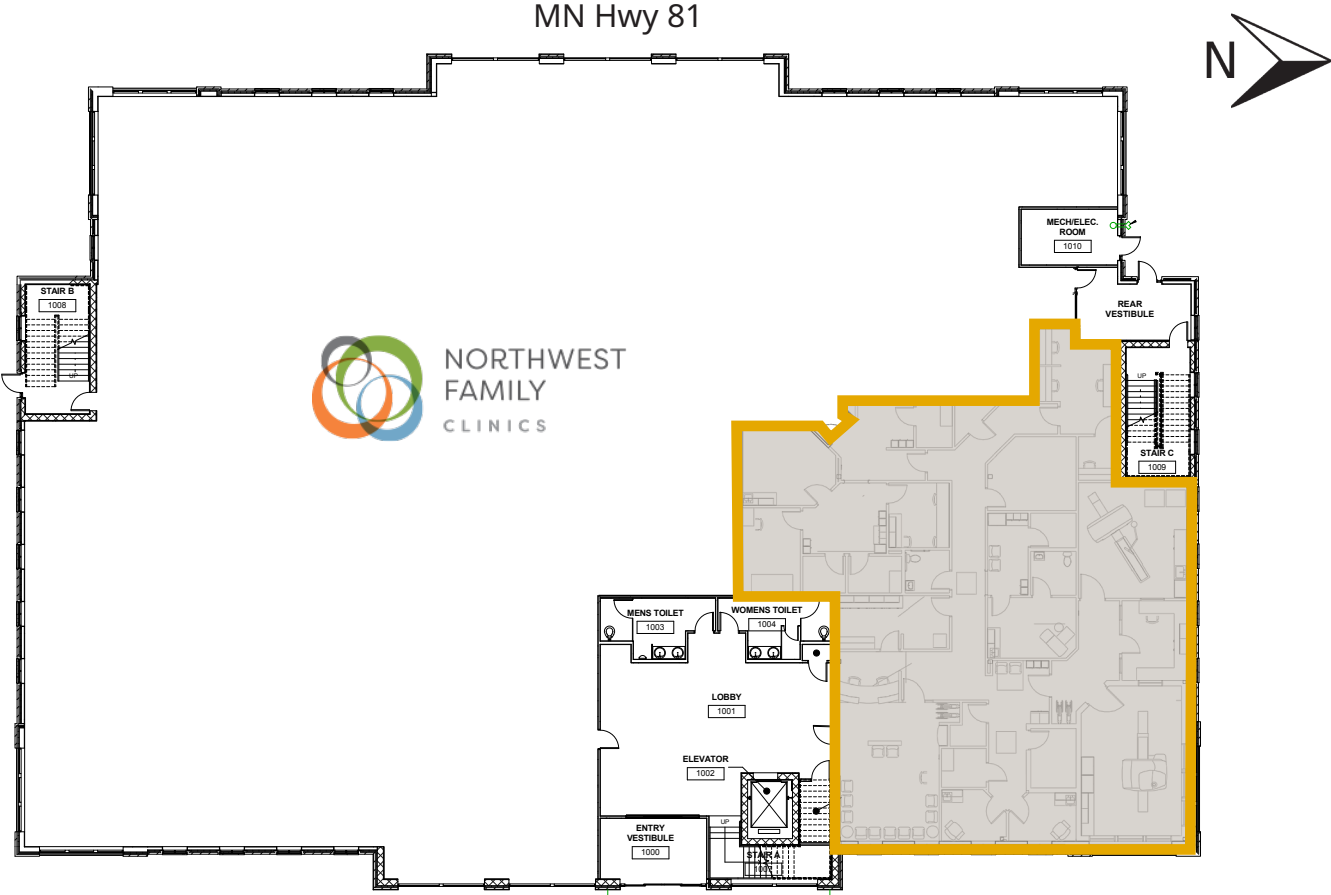


Medical Space For Lease

Crystal Medical Center | 5700 Bottineau Blvd, Crystal, MN 55429

Floor Plans

1st Floor
5,274 SF Available



Anne Madyun, CCIM
612.454.4172
amadyun@davishre.com

Jill Rasmussen, CCIM, SIOR
612.341.3247
jrasmussen@davishre.com

Nick Holien
612.454.4167
nholien@davishre.com
davishre.com





Medical Space For Lease

Crystal Medical Center | 5700 Bottineau Blvd, Crystal, MN 55429

Interior Photos



Anne Madyun, CCIM
612.454.4172
amadyun@davishre.com

Jill Rasmussen, CCIM, SIOR
612.341.3247
jrasmussen@davishre.com

Nick Holien
612.454.4167
nholien@davishre.com davishre.com





Medical Space For Lease

Crystal Medical Center | 5700 Bottineau Blvd, Crystal, MN 55429

Local Retail View



Crystal Medical Center
5700 Bottineau Blvd
Crystal, MN 55429

Anne Madyun, CCIM
612.454.4172
amadyun@davishre.com

Jill Rasmussen, CCIM, SIOR
612.341.3247
jrasmussen@davishre.com

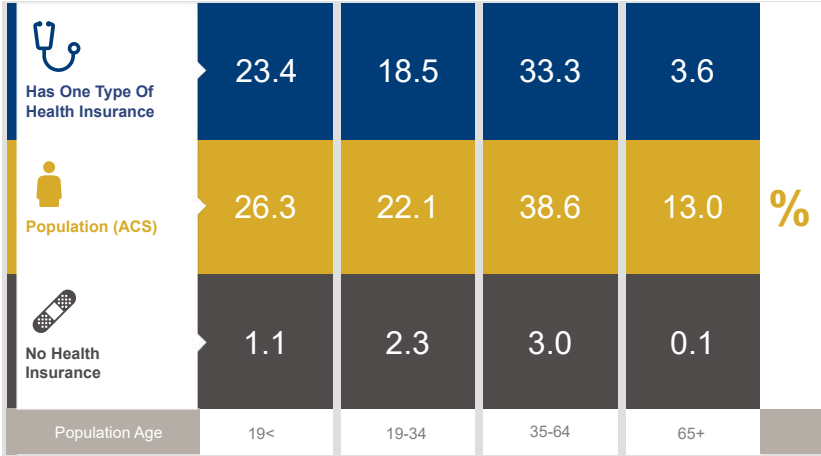
Nick Holien
612.454.4167
nholien@davishre.com
davishre.com



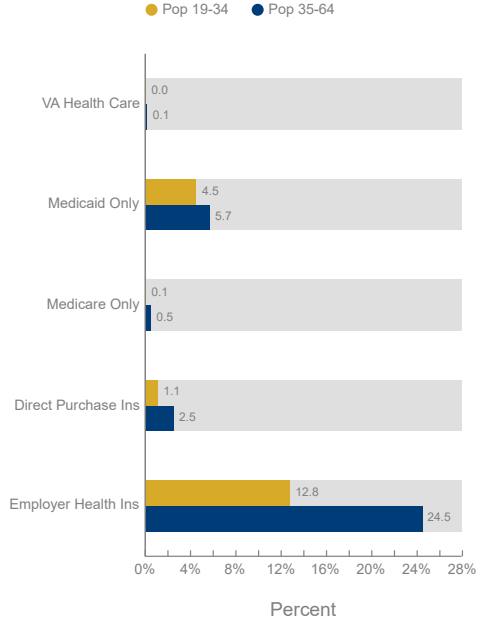
Medical Space For Lease

Crystal Medical Center | 5700 Bottineau Blvd, Crystal, MN 55429

Healthcare and Insurance Statistics



Health Insurance Coverage (ACS)



Health Care (Consumer Spending)	Annual Expenditure
Medicare Payments	\$925.9
Physician Services	\$256.9
Dental Services	\$425.3
Eye care Services	\$80.5
Lab Tests/X-rays	\$70.4
Hospital Room & Hospital Service	\$233.3

Anne Madyun, CCIM
612.454.4172
amadyun@davishre.com

Jill Rasmussen, CCIM, SIOR
612.341.3247
jrasmussen@davishre.com

Nick Holien
612.454.4167
nholien@davishre.com

davishre.com





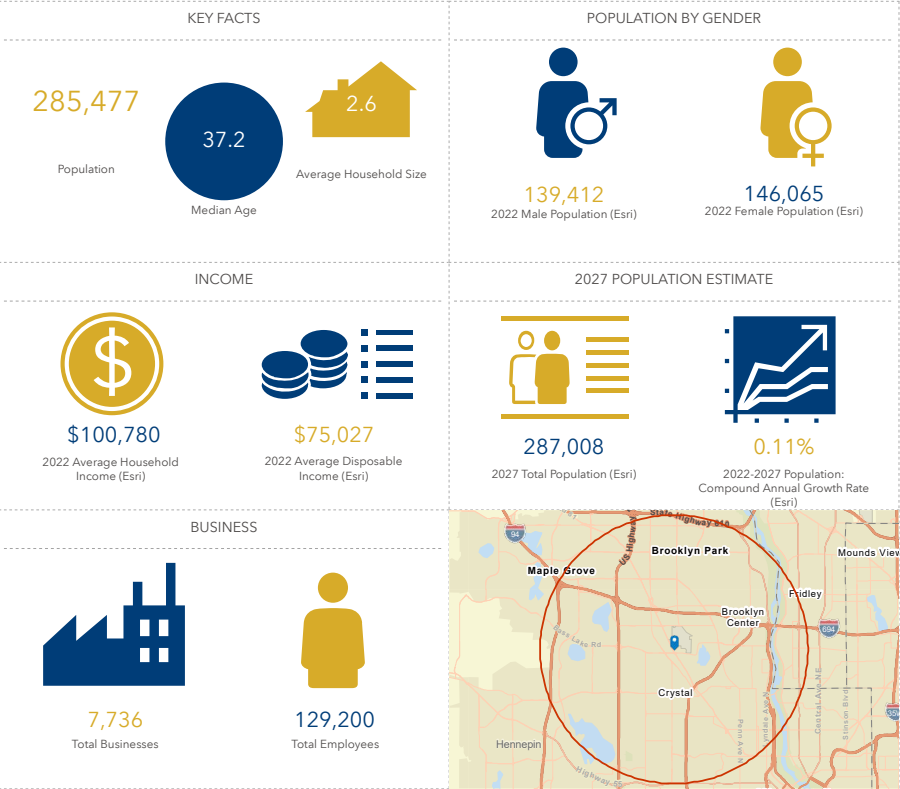
Medical Space For Lease

Crystal Medical Center | 5700 Bottineau Blvd, Crystal, MN 55429

The Crystal Market

Top Employers	# of Employees	Type
Crystal Care Center	200	Healthcare
Target	185	Retail Trade
Cub Foods	156	Retail Trade
City of Crystal	101	Government
Kilmer Electric Co., Inc.	96	Manufacturing
Buffalo Wild Wings	65	Retail Trade
Crystal Super value	60	Retail Trade
McDonald's	44	Retail Trade
Minnesota Grinding	40	Manufacturing
Perkins	37	Retail Trade

Key Facts



Anne Madyun, CCIM
612.454.4172
amadyun@davishre.com

Jill Rasmussen, CCIM, SIOR
612.341.3247
jrasmussen@davishre.com

Nick Holien
612.454.4167
nholien@davishre.com
davishre.com





Medical Space For Lease

Crystal Medical Center | 5700 Bottineau Blvd, Crystal, MN 55429



For leasing information please contact

Anne Madyun, CCIM 612.454.4172 amadyun@davishre.com	Jill Rasmussen, CCIM, SIOR 612.341.3247 jrasmussen@davishre.com	Nick Holien 612.454.4167 nholien@davishre.com	davishre.com
--	--	--	---------------------

