



Medical Space For Lease

Blaine Medical Center | 11855 Ulysses Street Northeast, Blaine, MN 55449



Anne Madyun CCIM
612.454.4172
amadyun@davishre.com

Jill Rasmussen CCIM, SIOR
612.341.3247
jrasmussen@davishre.com



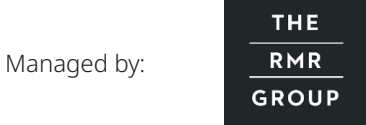
Medical Space For Lease

Blaine Medical Center | 11855 Ulysses Street Northeast, Blaine, MN 55449



<ul style="list-style-type: none"> • Class "A" medical building • Excellent visibility from Highway 65/Central Ave NE • Exterior signage opportunities • Surgery Center on-site • Strong area demographics • Ample parking for patients, staff & physicians 	Building Size:	Space Available:
	78,132 sq. ft.	832 - 16,621 sq. ft.
	Net Rental Rate:	\$23.00/sq. ft. 1st/2nd \$15.00/sq. ft. LL
	Operating Expenses:	\$ 13.63/sq. ft.
	Real Estate Taxes:	\$ 4.82/sq. ft.

BUILDING TENANTS



Anne Madyun CCIM
612.454.4172
amadyun@davishre.com

Jill Rasmussen CCIM, SIOR
612.341.3247
jrasmussen@davishre.com

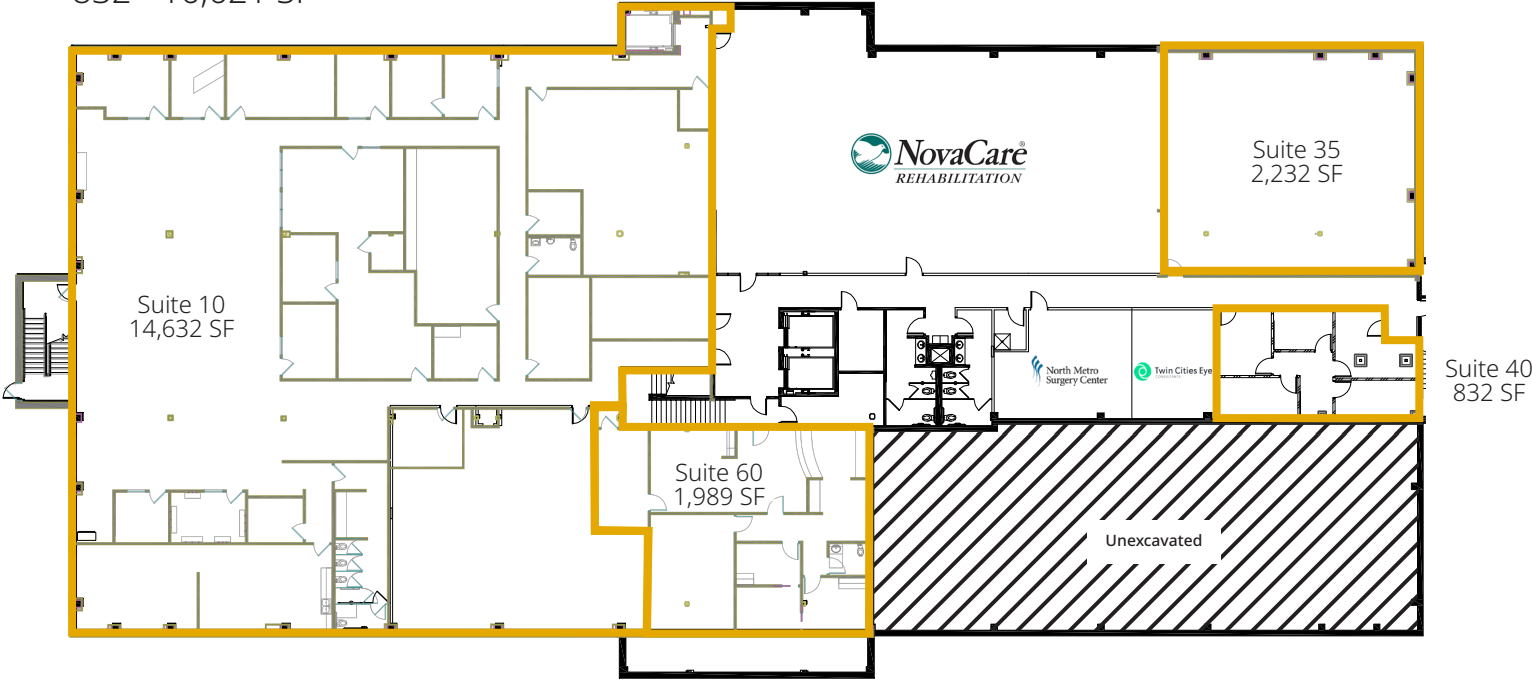


Medical Space For Lease

Blaine Medical Center | 11855 Ulysses Street Northeast, Blaine, MN 55449

Floor Plans

Lower Level
832 - 16,621 SF



Anne Madyun CCIM
612.454.4172
amadyun@davishre.com

Jill Rasmussen CCIM, SIOR
612.341.3247
jrasmussen@davishre.com

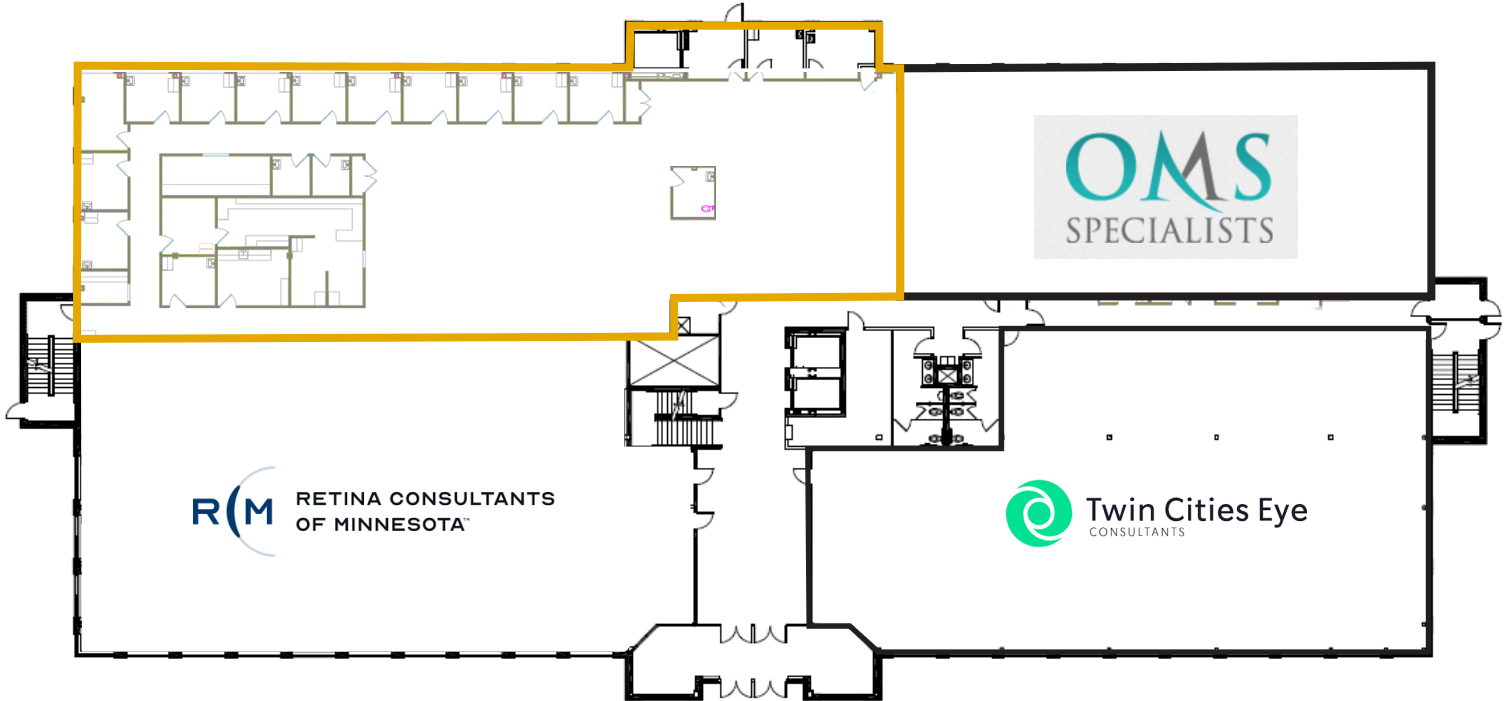


Medical Space For Lease

Blaine Medical Center | 11855 Ulysses Street Northeast, Blaine, MN 55449

Floor Plans

1st Level
2,000 - 8,167 SF



Anne Madyun CCIM
612.454.4172
amadyun@davishre.com

Jill Rasmussen CCIM, SIOR
612.341.3247
jrasmussen@davishre.com

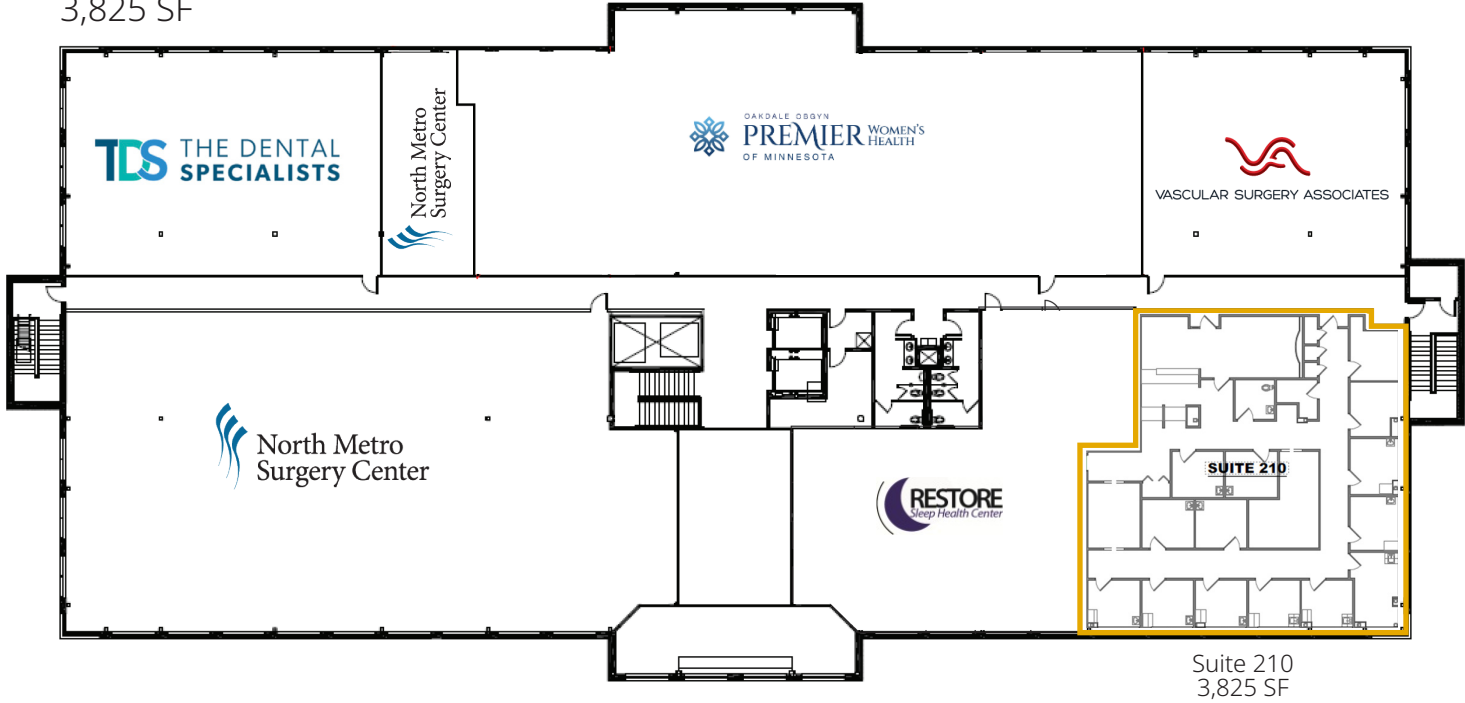


Medical Space For Lease

Blaine Medical Center | 11855 Ulysses Street Northeast, Blaine, MN 55449

Floor Plans

2nd Level
3,825 SF



Anne Madyun CCIM
612.454.4172
amadyun@davishre.com

Jill Rasmussen CCIM, SIOR
612.341.3247
jrasmussen@davishre.com



Medical Space For Lease

Blaine Medical Center | 11855 Ulysses Street Northeast, Blaine, MN 55449

Interior Photos



Anne Madyun CCIM
612.454.4172
amadyun@davishre.com

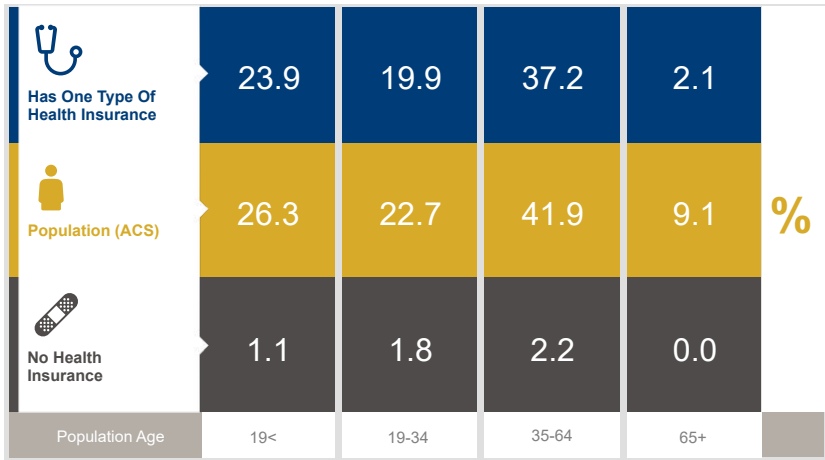
Jill Rasmussen CCIM, SIOR
612.341.3247
jrasmussen@davishre.com



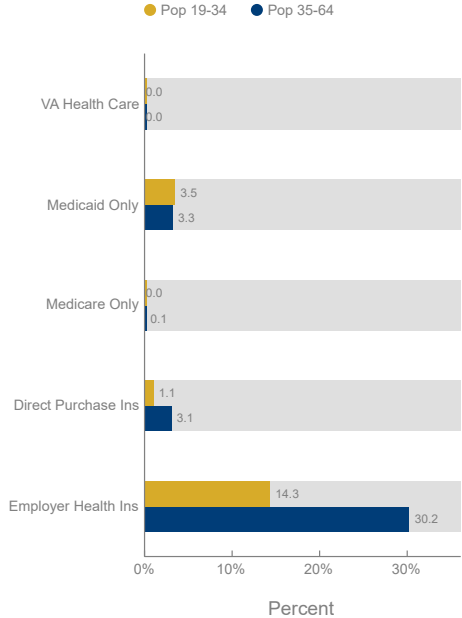
Medical Space For Lease

Blaine Medical Center | 11855 Ulysses Street Northeast, Blaine, MN 55449

Healthcare and Insurance Statistics



Health Insurance Coverage (ACS)



Healthcare Consumer Spending	Annual Expenditure
Medicare Payments	\$861.1
Physician Services	\$348.7
Dental Services	\$528.2
Eyecare Services	\$92.0
Lab Tests/X-rays	\$93.0
Hospital Room & Hospital Service	\$291.6
Convalescent/Nursing Home Care	\$37.3

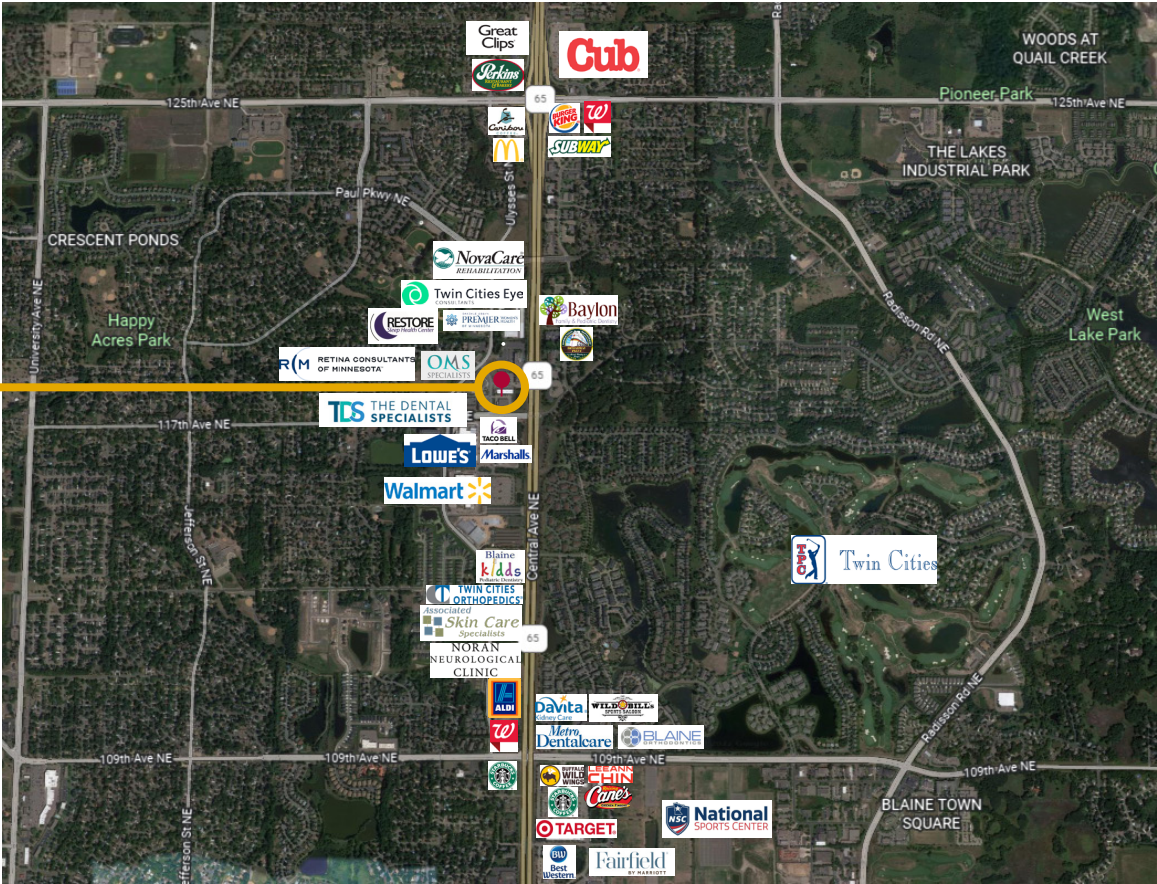
*ACS: American Community Survey



Medical Space For Lease

Blaine Medical Center | 11855 Ulysses Street Northeast, Blaine, MN 55449

Aerial View



Blaine Medical Center
11855 Ulysses Street Northeast
Blaine, MN 55434

Anne Madyun CCIM
612.454.4172
amadyun@davishre.com

Jill Rasmussen CCIM, SIOR
612.341.3247
jrasmussen@davishre.com



Medical Space For Lease

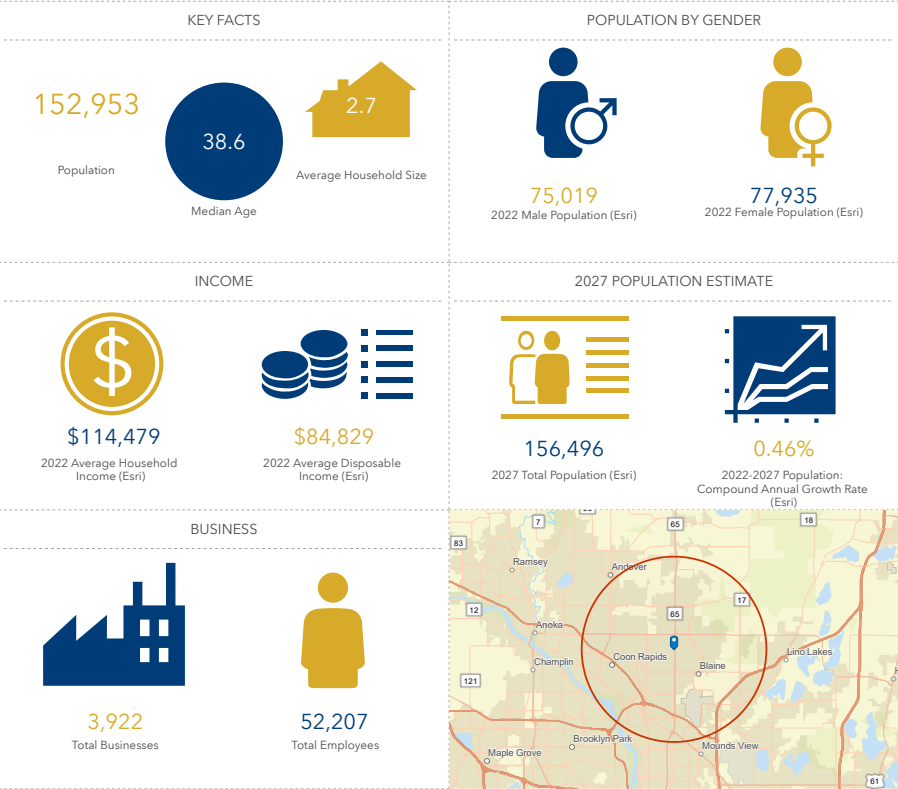
Blaine Medical Center | 11855 Ulysses Street Northeast, Blaine, MN 55449

The Blaine Market

Top Employers	# of Employees	Type
Aveda	730	Retail Trade
Infinite Campus	500	Educational Services
Cub Foods	433	Retail Trade
Carley Foundry	420	Manufacturing
Walmart	312	Retail Trade
National Sports Center	297	Entertainment
Target	270	Retail Trade
Home Depot	237	Retail Trade
Bermo, Inc.	236	Manufacturing
City of Blaine	214	Government/Public
Lowe's	142	Retail Trade

Key Facts

11855 Ulysses St NE, Minneapolis, Minnesota, 55434
5-Mile radius



Anne Madyun CCIM
612.454.4172
amadyun@davishre.com

Jill Rasmussen CCIM, SIOR
612.341.3247
jrasmussen@davishre.com