



# Medical Space For Lease

920 Medical | 920 E 28th St, Minneapolis, MN 55407



**Anne Madyun, CCIM**  
612.454.4172  
amadyun@davishre.com

**Jill Rasmussen, CCIM, SIOR**  
612.341.3247  
jrasmussen@davishre.com

**Nick Holien**  
612.454.4167  
nholien@davishre.com [davishre.com](http://davishre.com)

**Healthpeak®** | **DOC LISTED NYSE**



# Medical Space For Lease

920 Medical | 920 E 28th St, Minneapolis, MN 55407



- Beautiful multi-level atrium lobby
- Conveniently located on the Abbott Northwestern and Children's Hospital Campus
- Easy access to both hospitals by tunnels and skyway
- Direct link to adjacent parking
- Attractive net rates and TI allowances

**Building Size:**  
76,499 sq. ft.

**Space Available:**  
2,000 - 10,646 sq. ft.



### BUILDING TENANTS:



### HOSPITAL

Abbott Northwestern is the largest private hospital in the Twin Cities, and serves 200,000+ patients each year. Children's hospital services over 130,000+ patients a year, as well as, a new Mother Baby Center.



### 2023 ESTIMATED POPULATION

1 mile: 46,328  
 3 miles: 269,338  
 5 miles: 515,104



### 2023 ESTIMATED AVERAGE HOUSEHOLD INCOME

1 mile: \$61,912  
 3 miles: \$101,788  
 5 miles: \$114,489

**Anne Madyun, CCIM** | **Jill Rasmussen, CCIM, SIOR** | **Nick Holien**  
 612.454.4172 | 612.341.3247 | 612.454.4167  
 amadyun@davishre.com | jrasmussen@davishre.com | nholien@davishre.com | [davishre.com](http://davishre.com)



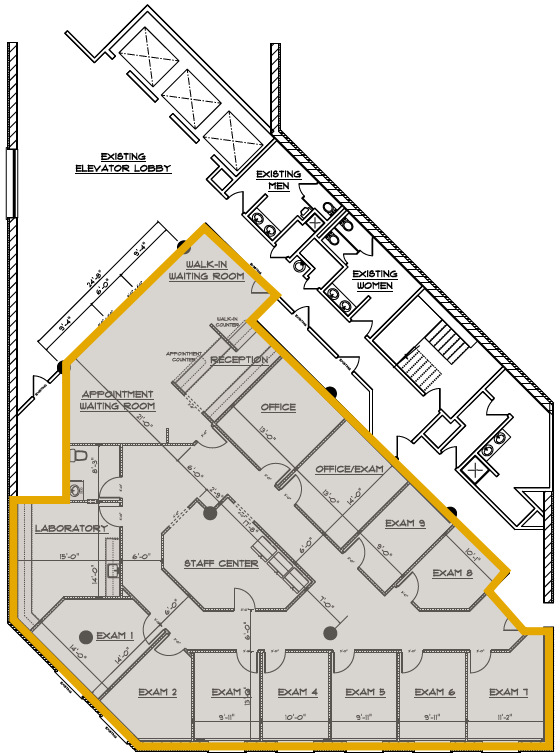


# Medical Space For Lease

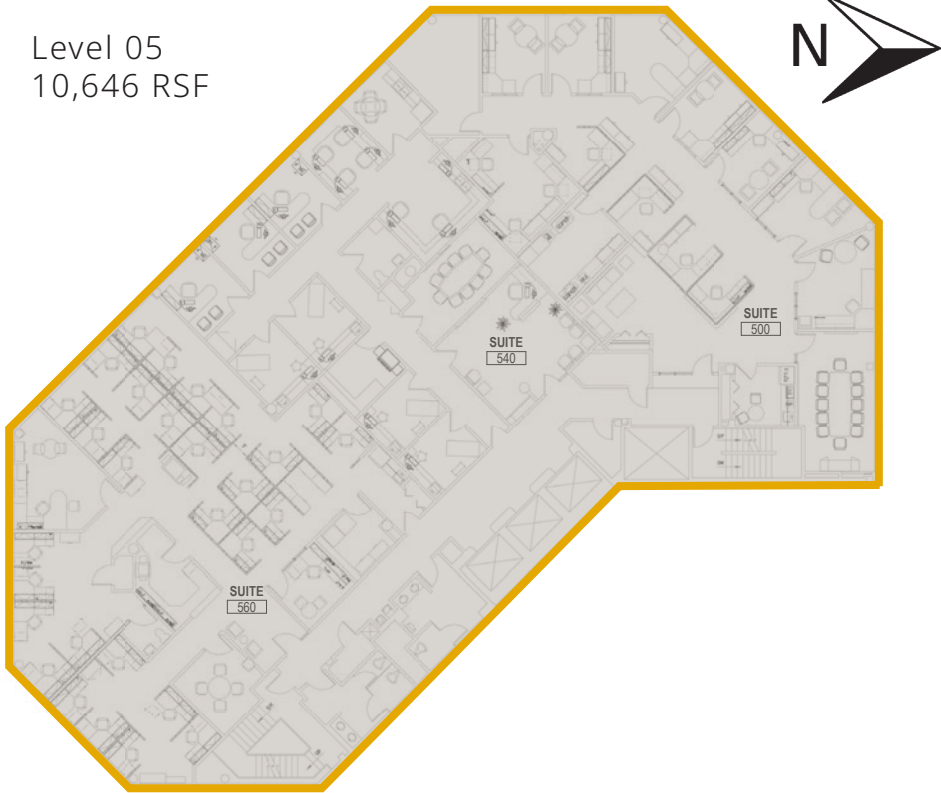
920 Medical | 920 E 28th St, Minneapolis, MN 55407

## Floor Plans

Lower Level  
4,399 RSF



Level 05  
10,646 RSF



Anne Madyun, CCIM  
612.454.4172  
amadyun@davishre.com

Jill Rasmussen, CCIM, SIOR  
612.341.3247  
jrasmussen@davishre.com

Nick Holien  
612.454.4167  
nholien@davishre.com

davishre.com



# Medical Space For Lease

920 Medical | 920 E 28th St, Minneapolis, MN 55407

## Interior



Anne Madyun, CCIM  
612.454.4172  
amadyun@davishre.com

Jill Rasmussen, CCIM, SIOR  
612.341.3247  
jrasmussen@davishre.com

Nick Holien  
612.454.4167  
nholien@davishre.com [davishre.com](http://davishre.com)

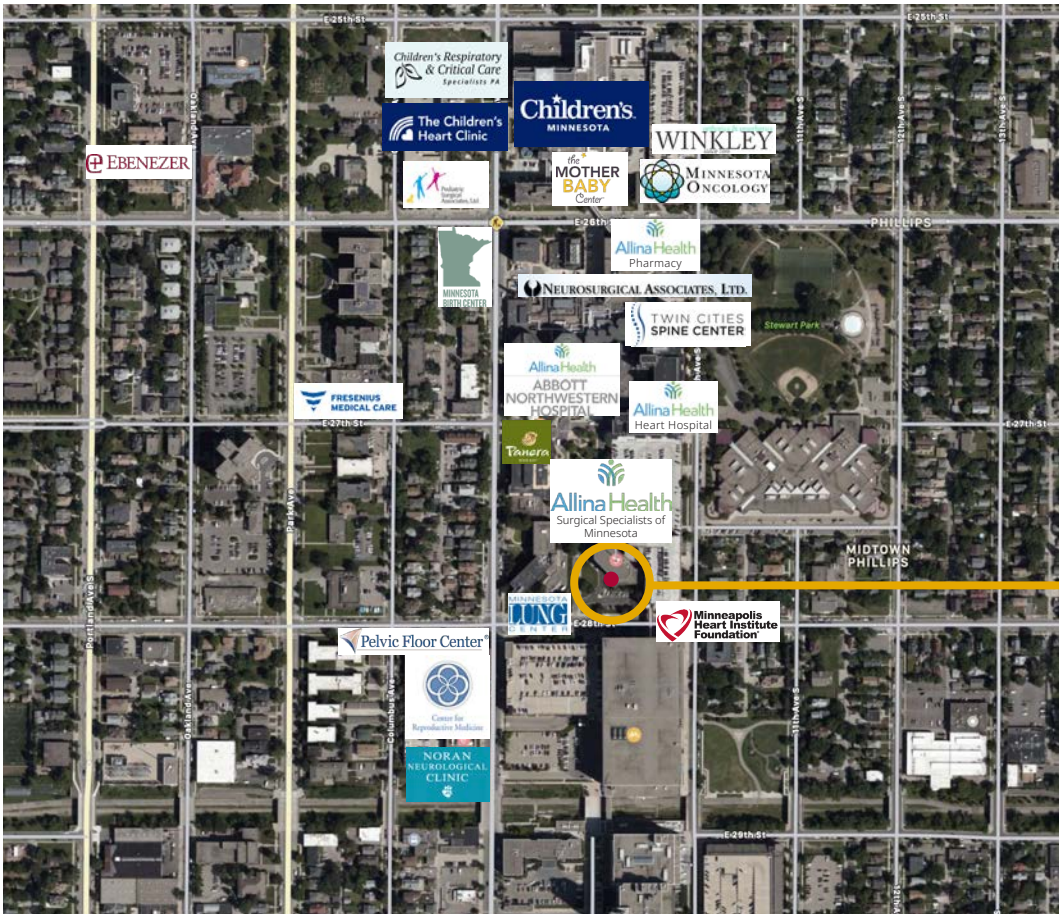




# Medical Space For Lease

920 Medical | 920 E 28th St, Minneapolis, MN 55407

## Aerial View



920 Medical Place  
920 E 28th Street  
Minneapolis, MN 55404

Anne Madyun, CCIM  
612.454.4172  
amadyun@davishre.com

Jill Rasmussen, CCIM, SIOR  
612.341.3247  
jrasmussen@davishre.com

Nick Holien  
612.454.4167  
nholien@davishre.com

davishre.com

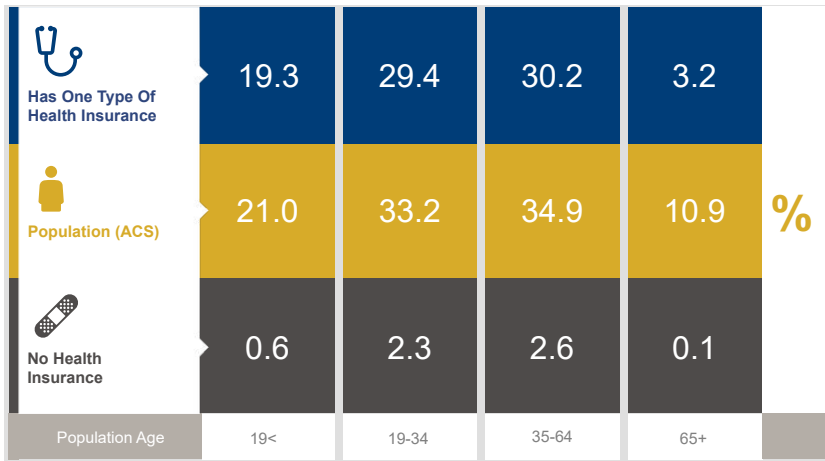




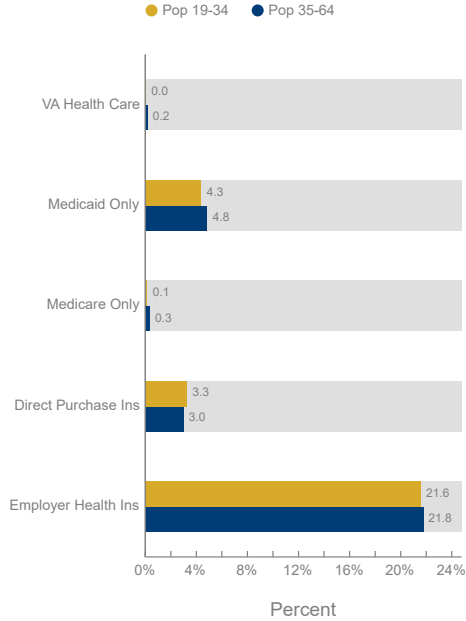
# Medical Space For Lease

920 Medical | 920 E 28th St, Minneapolis, MN 55407

## Healthcare and Insurance Statistics



Health Insurance Coverage (ACS)



Health Care (Consumer Spending)	Annual Expenditure
Medicare Payments	\$999.5
Physician Services	\$275.4
Dental Services	\$461.2
Eyecare Services	\$87.3
Lab Tests/X-rays	\$76.2
Hospital Room & Hospital Service	\$252.2

\*ACS: American Community Survey



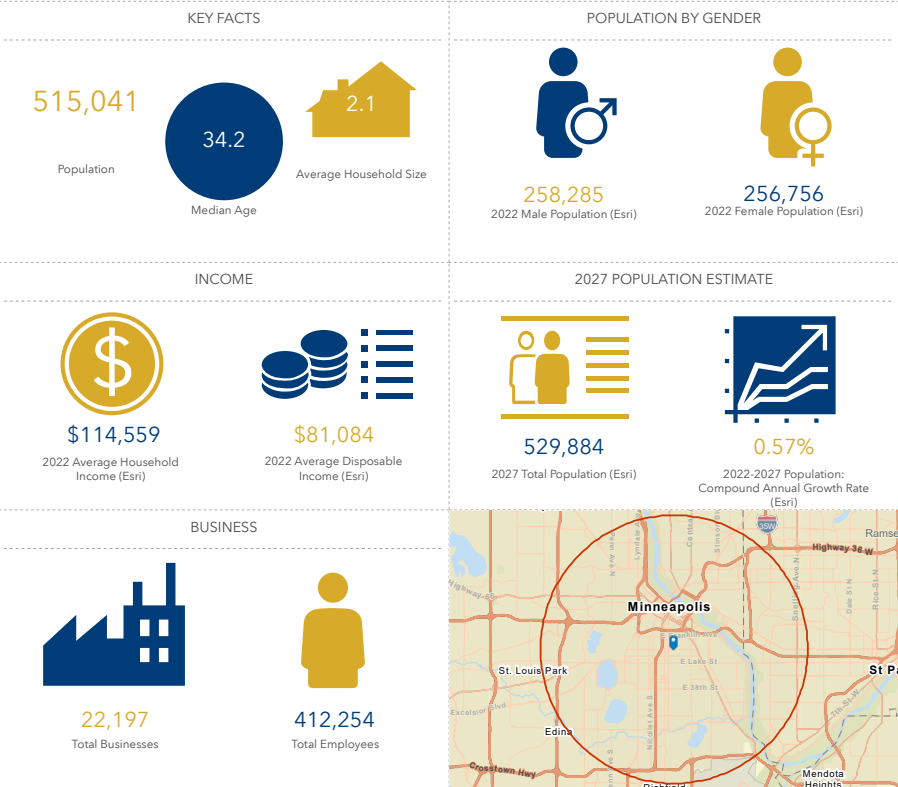
# Medical Space For Lease

920 Medical | 920 E 28th St, Minneapolis, MN 55407

## The Minneapolis Market

Top Employers	# of Employees	Type
Target	8,500	Retail Trade
<b>Hennepin Healthcare</b>	<b>7,111</b>	<b>Healthcare</b>
Wells Fargo	7,000	Financial Services
Hennepin County	5,995	Government
U.S. Bank	4,968	Financial Services
Ameriprise	4,842	Financial Services
<b>Abbott Northwestern</b>	<b>4,573</b>	<b>Healthcare</b>
<b>Children's Minnesota</b>	<b>3,710</b>	<b>Healthcare</b>
Xcel Energy	2,252	Utilities
City of Minneapolis	1,744	Government
RBC Wealth Management	1,575	Financial Services

### Key Facts



Anne Madyun, CCIM  
612.454.4172  
amadyun@davishre.com

Jill Rasmussen, CCIM, SIOR  
612.341.3247  
jrasmussen@davishre.com

Nick Holien  
612.454.4167  
nholien@davishre.com  
davishre.com





# Medical Space For Lease

920 Medical | 920 E 28th St, Minneapolis, MN 55407



**For leasing information please contact**

<b>Anne Madyun, CCIM</b> 612.454.4172 amadyun@davishre.com	<b>Jill Rasmussen, CCIM, SIOR</b> 612.341.3247 jrasmussen@davishre.com	<b>Nick Holien</b> 612.454.4167 nholien@davishre.com	<b>davishre.com</b>
--	--	--	---------------------

