



Medical Space For Lease

910 Medical | 910 E 26th St, Minneapolis, MN 55404



Anne Madyun, CCIM
612.454.4172
amadyun@davishre.com

Jill Rasmussen, CCIM, SIOR
612.341.3247
jrasmussen@davishre.com

Nick Holien
612.454.4167
nholien@davishre.com **davishre.com**

Healthpeak® | **DOC LISTED NYSE**



Medical Space For Lease

910 Medical | 910 E 26th St, Minneapolis, MN 55404



- Common area renovations completed in 2020
- Beautiful multi-level atrium lobby
- Conveniently located on the Abbott Northwestern and Children’s Hospital Campus
- Easy access to hospitals by tunnels

Building Size:
61,609 sq. ft.

Space Available:
36,506 sq. ft.



BUILDING TENANTS:



HOSPITAL

Abbott Northwestern is the largest private hospital in the Twin Cities, and serves 200,000+ patients each year. Children’s hospital services over 130,000+ patients a year, as well as, a new Mother Baby Center.



2024 ESTIMATED POPULATION

1 mile: 46,018
 3 miles: 269,383
 5 miles: 516,854



2024 ESTIMATED AVERAGE HOUSEHOLD INCOME

1 mile: \$63,461
 3 miles: \$105,462
 5 miles: \$119,885

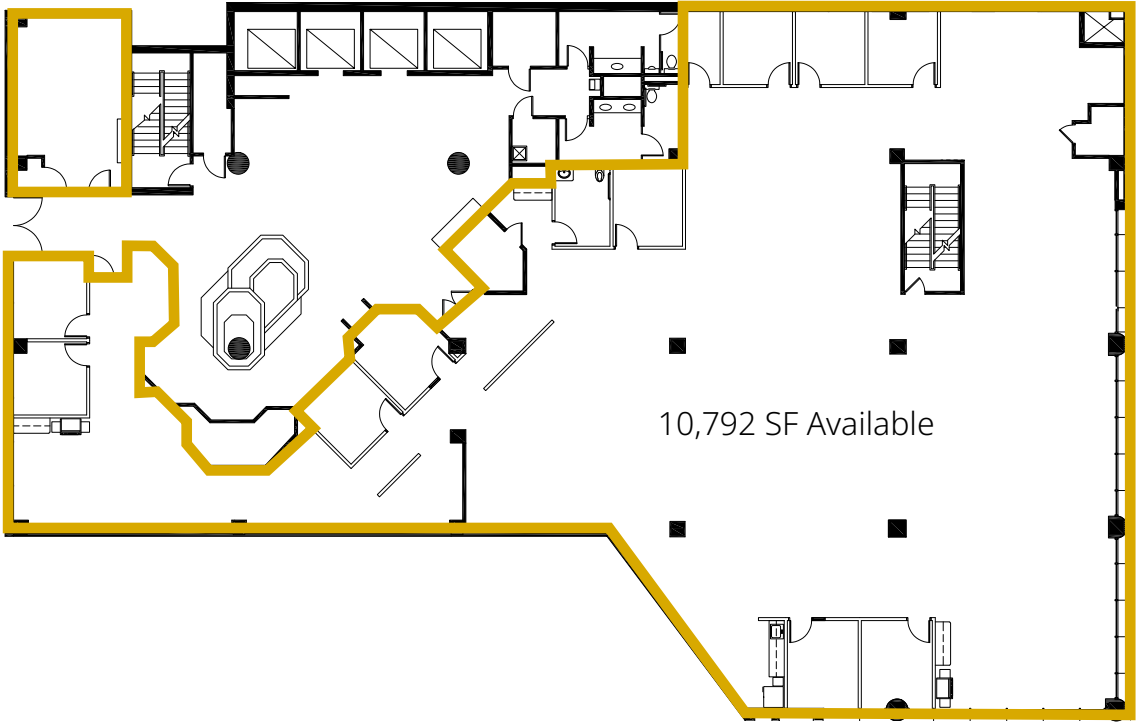


Medical Space For Lease

910 Medical | 910 E 26th St, Minneapolis, MN 55404

Floor Plans

Lower Level
10,792 RSF



10,792 SF Available

Anne Madyun, CCIM
612.454.4172
amadyun@davishre.com

Jill Rasmussen, CCIM, SIOR
612.341.3247
jrasmussen@davishre.com

Nick Holien
612.454.4167
nholien@davishre.com davishre.com





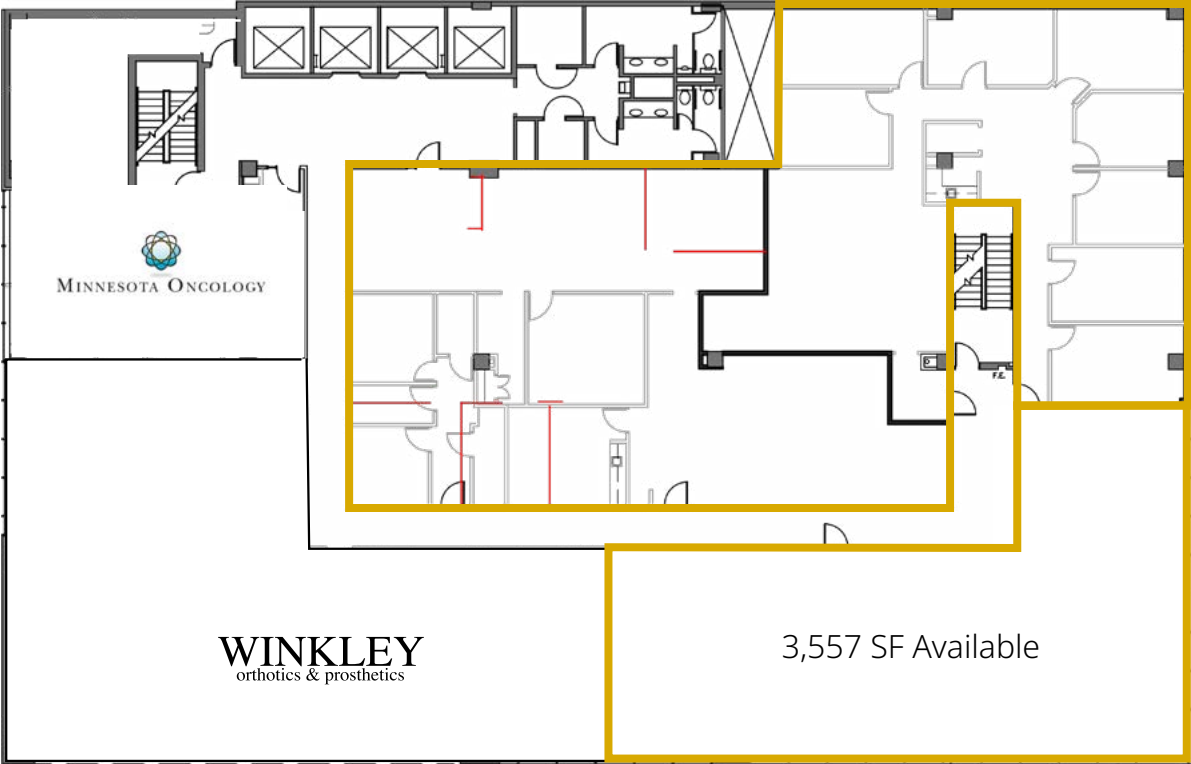
Medical Space For Lease

910 Medical | 910 E 26th St, Minneapolis, MN 55404

Floor Plans

Level 03
3,557 - 10,019 RSF

6,462 SF Available



Anne Madyun, CCIM
612.454.4172
amadyun@davishre.com

Jill Rasmussen, CCIM, SIOR
612.341.3247
jrasmussen@davishre.com

Nick Holien
612.454.4167
nholien@davishre.com
davishre.com



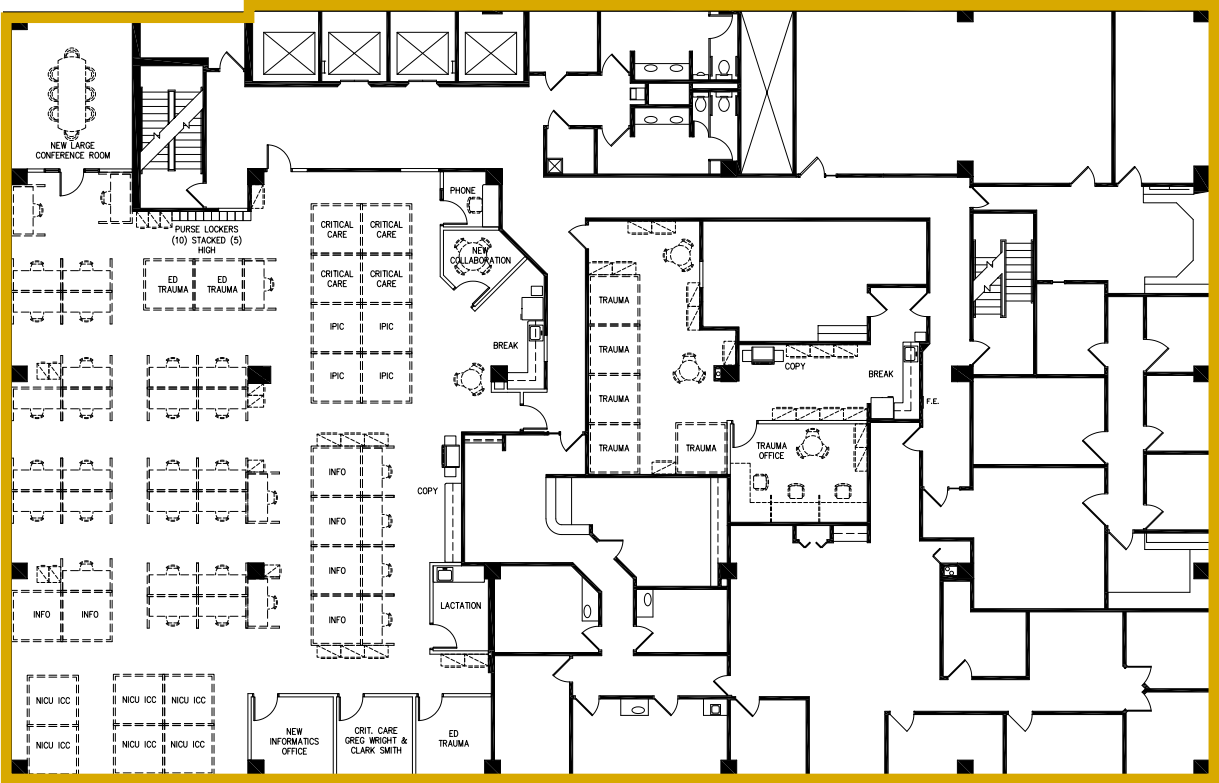


Medical Space For Lease

910 Medical | 910 E 26th St, Minneapolis, MN 55404

Floor Plans

Level 04
15,157 RSF



Anne Madyun, CCIM
612.454.4172
amadyun@davishre.com

Jill Rasmussen, CCIM, SIOR
612.341.3247
jrasmussen@davishre.com

Nick Holien
612.454.4167
nholien@davishre.com
davishre.com





Medical Space For Lease

910 Medical | 910 E 26th St, Minneapolis, MN 55404

Interior



Anne Madyun, CCIM
612.454.4172
amadyun@davishre.com

Jill Rasmussen, CCIM, SIOR
612.341.3247
jrasmussen@davishre.com

Nick Holien
612.454.4167
nholien@davishre.com davishre.com

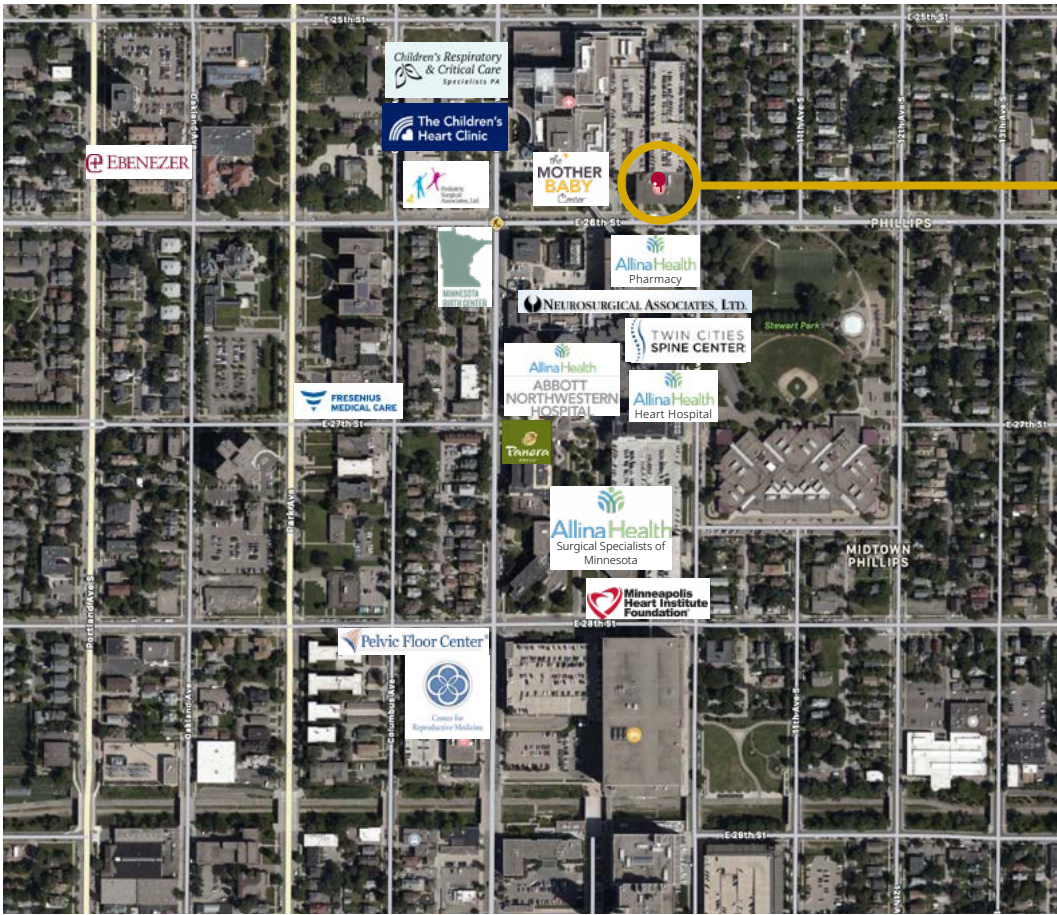




Medical Space For Lease

910 Medical | 910 E 26th St, Minneapolis, MN 55404

Aerial View



910 Medical Place
910 E 26th Street
Minneapolis, MN 55404

Anne Madyun, CCIM
612.454.4172
amadyun@davishre.com

Jill Rasmussen, CCIM, SIOR
612.341.3247
jrasmussen@davishre.com

Nick Holien
612.454.4167
nholien@davishre.com

davishre.com

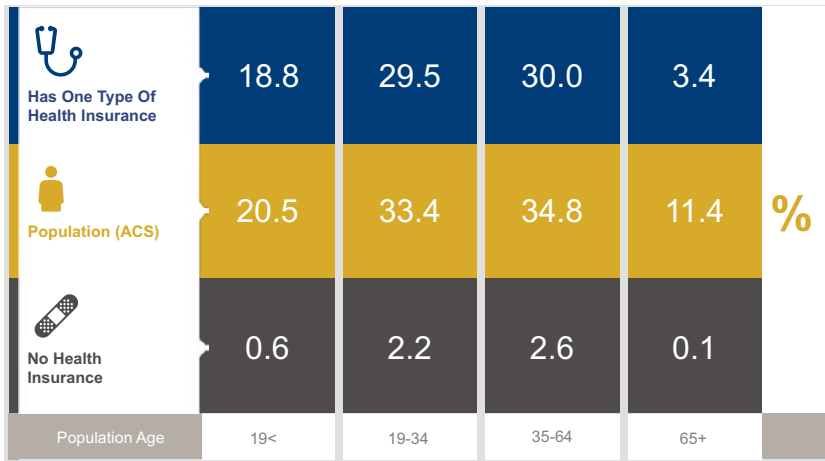




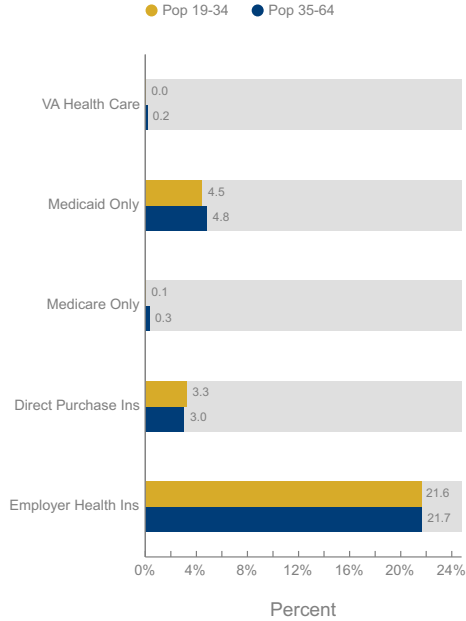
Medical Space For Lease

910 Medical | 910 E 26th St, Minneapolis, MN 55404

Healthcare and Insurance Statistics



Health Insurance Coverage (ACS)



Health Care (Consumer Spending)	Annual Expenditure
Medicare Payments	\$1,089.7
Physician Services	\$330.1
Dental Services	\$500.1
Eyecare Services	\$90.7
Lab Tests/X-rays	\$85.1
Hospital Room & Hospital Service	\$285.1

*ACS: American Community Survey



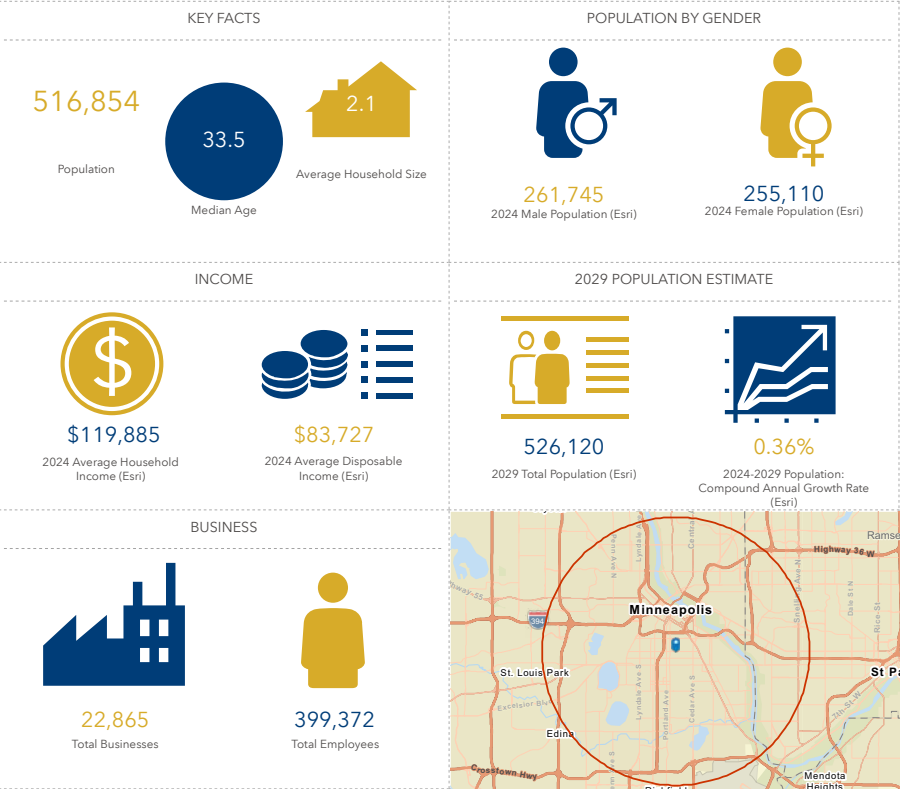
Medical Space For Lease

910 Medical | 910 E 26th St, Minneapolis, MN 55404

The Minneapolis Market

Top Employers	# of Employees	Type
Target	8,500	Retail Trade
Hennepin Healthcare	7,111	Healthcare
Wells Fargo	7,000	Financial Services
Hennepin County	5,995	Government
U.S. Bank	4,968	Financial Services
Ameriprise	4,842	Financial Services
Abbott Northwestern	4,573	Healthcare
Children's Minnesota	3,710	Healthcare
Xcel Energy	2,252	Utilities
City of Minneapolis	1,744	Government
RBC Wealth Management	1,575	Financial Services

Key Facts



Anne Madyun, CCIM
612.454.4172
amadyun@davishre.com

Jill Rasmussen, CCIM, SIOR
612.341.3247
jrasmussen@davishre.com

Nick Holien
612.454.4167
nholien@davishre.com
davishre.com





Medical Space For Lease

910 Medical | 910 E 26th St, Minneapolis, MN 55404



For leasing information please contact

Anne Madyun, CCIM
612.454.4172
amadyun@davishre.com

Jill Rasmussen, CCIM, SIOR
612.341.3247
jrasmussen@davishre.com

Nick Holien
612.454.4167
nholien@davishre.com

davishre.com

